

IN THE DISTRICT COURT OF THE FIFTH JUDICIAL DISTRICT OF THE
 STATE OF IDAHO, IN AND FOR THE COUNTY OF TWIN FALLS

In Re CSRBA) PARTIAL DECREE PURSUANT TO I.R.C.P. 54(b)
 Case No. 49576) FOR FEDERAL RESERVED
 _____) WATER RIGHT NO. 94-09539A

NAME AND ADDRESS: UNITED STATES OF AMERICA ACTING THROUGH
 USDA FOREST SERVICE
 550 W FORT ST MSC 033
 BOISE ID 83724

SOURCE: See Attachment 1, Column A TRIBUTARY: See Attachment 1, Column B

Sources are located on National Forest System Land in the Twomile Creek-South Fork Coeur d'Alene River subwatershed (HUC12 170103020301).

QUANTITY: The amount of water necessary to control and suppress forest fires.

PRIORITY DATE: 11/06/1906

POINT OF DIVERSION: See Attachment 1, Columns C through G

PURPOSE AND PERIOD OF USE:	<u>PURPOSE OF USE</u> Administrative-Fire Suppression	<u>PERIOD OF USE</u> 01/01 - 12/31
----------------------------	--	---------------------------------------

PLACE OF USE: National Forests in Idaho and the Kaniksu, Lolo and Kootenai National Forests in Montana.

See Attachment 2.

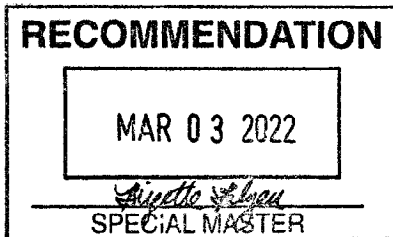
OTHER PROVISIONS NECESSARY FOR DEFINITION OR ADMINISTRATION OF THIS WATER RIGHT:

This right is limited to the intermittent diversion and use of water for the purpose of suppressing wildfires. This water right shall not be used as a basis to prevent the future appropriation of water.

This partial decree is subject to such general provisions necessary for the definition of the rights or for the efficient administration of the water rights as may be ultimately determined by the Court at a point in time no later than the entry of a final unified decree. Idaho Code § 42-1412(6).

RULE 54(b) CERTIFICATE

With respect to the issues determined by the above partial judgment it is hereby CERTIFIED, in accordance with Rule 54(b), I.R.C.P., that the court has determined that there is no just reason for delay of the entry of a final judgment and that the court has and does hereby direct that the above partial judgment is a final judgment upon which execution may issue and an appeal may be taken as provided by the Idaho Appellate Rules.



Eric J. Wildman
 Presiding Judge of the
 Coeur d'Alene-Spokane River Adjudication

Attachment 1






	A	B	C	D	E	F	G
1	SOURCE NAME	TO TRIBUTARY	TOWNSHIP	RANGE	SECTION	QQ	SURVEY CODE AND NUMBER
2	Unnamed Stream	Lake Creek	47N	04E	5		
3	Unnamed Stream	Lake Creek	47N	04E	5		
4	Unnamed Stream	Lake Creek	47N	04E	5		
5	Unnamed Stream	Lake Creek	47N	04E	6		
6	Unnamed Stream	South Fork Coeur d'Alene River	48N	03E	1	NENE	
7	Unnamed Stream	South Fork Coeur d'Alene River	48N	03E	1	NENE	
8	Unnamed Stream	South Fork Coeur d'Alene River	48N	03E	1	NESE	
9	Unnamed Stream	South Fork Coeur d'Alene River	48N	03E	1	SENE	
10	Unnamed Stream	South Fork Coeur d'Alene River	48N	03E	1	SWSE	L 2
11	Unnamed Stream	South Fork Coeur d'Alene River	48N	03E	1	SWSE	L 2
12	Unnamed Stream	South Fork Coeur d'Alene River	48N	03E	24		
13	Unnamed Stream	South Fork Coeur d'Alene River	48N	03E	24		
14	Unnamed Stream	South Fork Coeur d'Alene River	48N	03E	24		
15	Unnamed Stream	South Fork Coeur d'Alene River	48N	03E	25		
16	Unnamed Stream	South Fork Coeur d'Alene River	48N	03E	25		
17	Unnamed Stream	South Fork Coeur d'Alene River	48N	03E	25		
18	Unnamed Stream	South Fork Coeur d'Alene River	48N	03E	25		
19	Unnamed Stream	South Fork Coeur d'Alene River	48N	03E	26		
20	East Fork Twomile Creek	Twomile Creek	48N	04E	4		
21	Unnamed Stream	East Fork Twomile Creek	48N	04E	4		
22	East Fork Twomile Creek	Twomile Creek	48N	04E	5		
23	Twomile Creek	South Fork Coeur d'Alene River	48N	04E	5		
24	Unnamed Stream	Twomile Creek	48N	04E	5		
25	Unnamed Stream	Twomile Creek	48N	04E	5		
26	Unnamed Stream	Twomile Creek	48N	04E	5		
27	Unnamed Stream	Twomile Creek	48N	04E	5		
28	Unnamed Stream	South Fork Coeur d'Alene River	48N	04E	6		
29	Unnamed Stream	South Fork Coeur d'Alene River	48N	04E	6		
30	Unnamed Stream	South Fork Coeur d'Alene River	48N	04E	6		
31	Unnamed Stream	South Fork Coeur d'Alene River	48N	04E	6		
32	Unnamed Stream	South Fork Coeur d'Alene River	48N	04E	6		
33	Unnamed Stream	South Fork Coeur d'Alene River	48N	04E	6		
34	Unnamed Stream	Twomile Creek	48N	04E	6		
35	Unnamed Stream	Twomile Creek	48N	04E	6		
36	Unnamed Stream	South Fork Coeur d'Alene River	48N	04E	7		
37	Unnamed Stream	South Fork Coeur d'Alene River	48N	04E	7		
38	Unnamed Stream	South Fork Coeur d'Alene River	48N	04E	7		
39	Unnamed Stream	Twomile Creek	48N	04E	7		
40	Twomile Creek	South Fork Coeur d'Alene River	48N	04E	8		
41	Unnamed Stream	South Fork Coeur d'Alene River	48N	04E	8		
42	Unnamed Stream	South Fork Coeur d'Alene River	48N	04E	8		
43	Unnamed Stream	Twomile Creek	48N	04E	8		
44	Unnamed Stream	Twomile Creek	48N	04E	8		
45	Unnamed Stream	Twomile Creek	48N	04E	8		
46	Unnamed Stream	South Fork Coeur d'Alene River	48N	04E	9		
47	Unnamed Stream	South Fork Coeur d'Alene River	48N	04E	9		
48	Unnamed Stream	South Fork Coeur d'Alene River	48N	04E	15		
49	Unnamed Stream	South Fork Coeur d'Alene River	48N	04E	15		
50	Unnamed Stream	South Fork Coeur d'Alene River	48N	04E	16		
51	Unnamed Stream	South Fork Coeur d'Alene River	48N	04E	16		
52	Unnamed Stream	Lake Creek	48N	04E	31		
53	Unnamed Stream	Lake Creek	48N	04E	31		
54	Unnamed Stream	Lake Creek	48N	04E	31		
55	Unnamed Stream	South Fork Coeur d'Alene River	48N	04E	31		
56	Unnamed Stream	Lake Creek	48N	04E	32		
57	Unnamed Stream	Lake Creek	48N	04E	32		
58	Unnamed Stream	Lake Creek	48N	04E	32		
59	Unnamed Stream	Lake Creek	48N	04E	32		
60	Unnamed Stream	Lake Creek	48N	04E	32		
61	Unnamed Stream	Lake Creek	48N	04E	32		
62	Unnamed Stream	Lake Creek	48N	04E	32		
63	Unnamed Stream	Lake Creek	48N	04E	32		
64	Unnamed Stream	South Fork Coeur d'Alene River	49N	03E	36		
65	Unnamed Stream	South Fork Coeur d'Alene River	49N	03E	36		
66	Twomile Creek	South Fork Coeur d'Alene River	49N	04E	31		
67	Unnamed Stream	South Fork Coeur d'Alene River	49N	04E	31		

Attachment 1

	A	B	C	D	E	F	G
1	SOURCE NAME	TO TRIBUTARY	TOWNSHIP	RANGE	SECTION	QQ	SURVEY CODE AND NUMBER
68	Unnamed Stream	South Fork Coeur d'Alene River	49N	04E	31		
69	Unnamed Stream	South Fork Coeur d'Alene River	49N	04E	31		
70	Unnamed Stream	Twomile Creek	49N	04E	31		
71	Twomile Creek	South Fork Coeur d'Alene River	49N	04E	32		
72	Unnamed Stream	Twomile Creek	49N	04E	32		
73	Unnamed Stream	Twomile Creek	49N	04E	32		
74	East Fork Twomile Creek	Twomile Creek	49N	04E	33		
75	Lost Lake	Lake Creek	47N	04E	6		
76	Unnamed Pond	Lake Creek	47N	04E	6		
77	Lost Lake	Lake Creek	48N	04E	31		

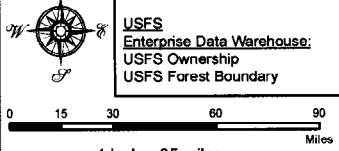
Attachment 2
 Place of Use Map Fire Suppression - Water Right No. 94-09539A
 National Forests in Idaho and the Kaniku, Lolo and Kootenai NF in Montana

Key to Features

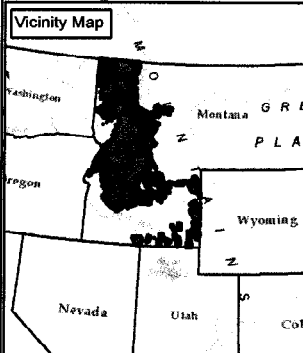
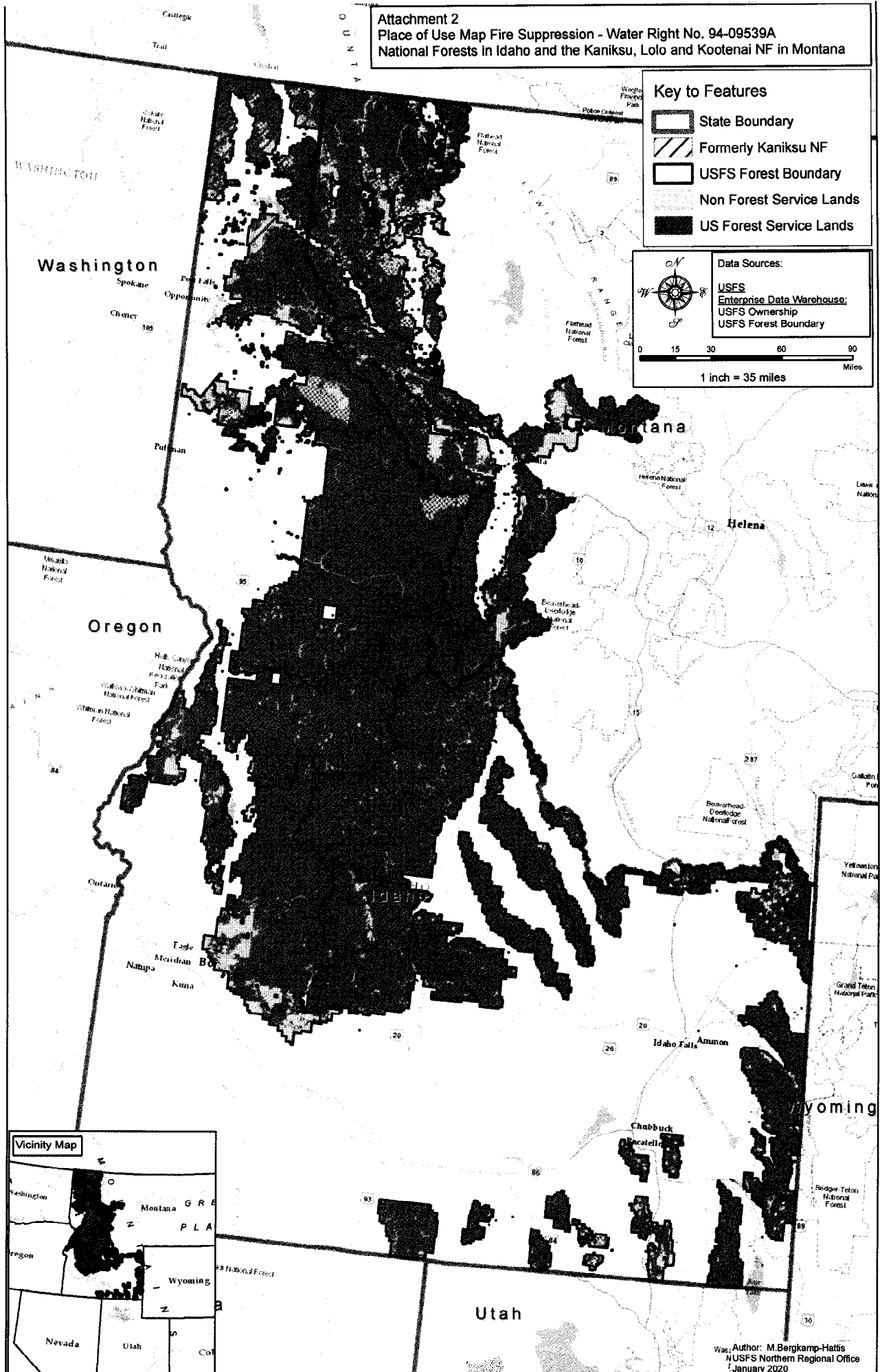
-  State Boundary
-  Formerly Kaniku NF
-  USFS Forest Boundary
-  Non Forest Service Lands
-  US Forest Service Lands

Data Sources:

- USFS
- Enterprise Data Warehouse
- USFS Ownership
- USFS Forest Boundary



0 15 30 60 90
Miles
1 inch = 35 miles



Author: M. Bergkamp-Hattis
 NUSFS Northern Regional Office
 January 2020